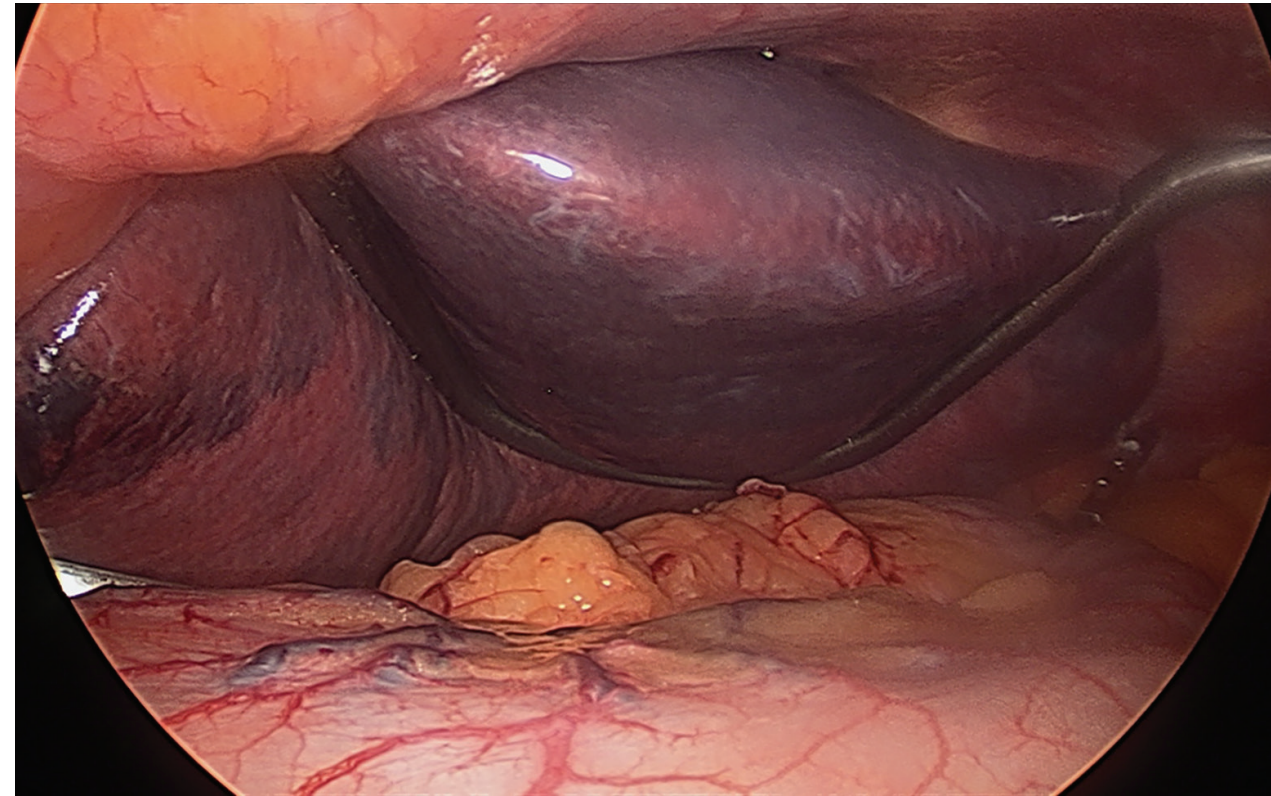


Metal Retractors Cause Harm



METAL RETRACTORS INCREASE PATIENT HARM AND PAIN

- ✘ Require an additional incision
- ✘ Can cause patient and/or liver damage
- ✘ Metal retractor can clash with robotic arms
- ✘ Increase patient post-op pain and pain medication
 - ✘ Increase patient recovery times
- ✘ Increase overall healthcare & procedure costs

LiVac® Retractor System

INDICATED FOR USE IN MINIMALLY INVASIVE AND ROBOTIC SURGERY FOR GENTLE RETRACTION OF SOLID ORGANS



LIVAC DETAILS AND ORDERING INFORMATION

Device Sizes	OD 56mm, OD 78mm (included in the part numbers below)
Part Numbers	FG04176: LiVac Retractor System – 56 mm, EO sterilized FG04177: LiVac Retractor System – 78 mm, EO sterilized Sold by each in a case of 5 per box
Indications For Use	The LiVac Retractor is designed as an organ and tissue retractor for use in laparoscopic procedures to elevate organs and tissue to provide improved access and visualization of surgical sites.
FDA Registration No:	510(k) number: K162445
Product Code:	GCI

For further information, please contact us at
CustomerService@livac.com

Livac USA
A: 7625 Golden Triangle Dr Suite G, Eden Prairie MN 55244 USA
P: +1 612 467 9186
E: CustomerService@Livac.com
W: Livac.com



For more information on the LiVac Retractor system,
please contact your representative or go to livac.com