

HAIZE MEDICAL

FDA: D205340



ViSure

NEW surgical retractor providing flexible tension

QIAN'S RETRACTOR



Disposable

U.S. Patent No: US 8480573 B2

QIAN'S RETRACTOR

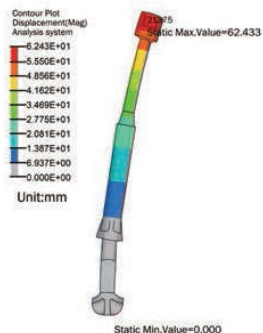
ViSure vs Metal Retractor Who wins?

ViSure Improve efficiency

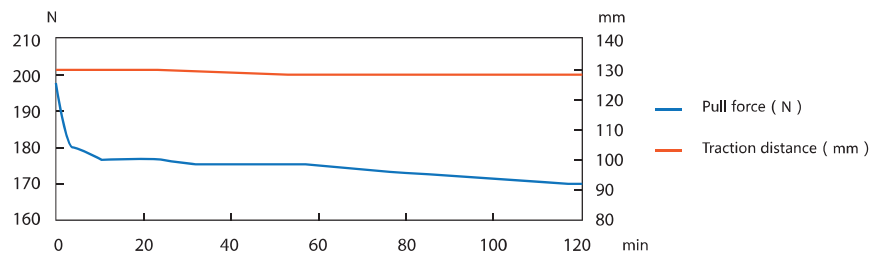
- 1 Fast setup time (1-2minutes) with good exposure of surgical view
- 2 Reduce human resource, increase surgical cases and fast response for any emergency
- 3 Disposable
- 4 No obstruction of surgeon's position

ViSure Reduce the risk of SSI (Surgical Site Infection) because wound tissue bears the least pull force under similar exposural condition

ViSure Made of medical grade polymer, this product owns the characteristic of stress relaxation. The experiment demonstrates that the traction reduces rapidly in the first 20 minutes upon achieving the pull effect without impact on traction distance, thus helps reduce tissue damage.



Mechanic simulation effect



Pull force and traction distance (traction = 20Kg)

Surgical site infection (SSI) is the primary nosocomial infection in US up to 38% and resulting in post surgical fatalities. Once SSI occurs, the average stay in hospital increases by 7 to 14days. As estimated SSI cost the U.S. up to 3.5-10 billion USD a year. Reduction of wound injury caused by pulling force and protection of incision can reduce the incidence of SSI up to 45%.*

* REFERENCE :

Infection Control And Hospital Epidemiology ,Vol 35,No.6 (June 2014) pp.605~627

Ann Surg 2011;253:1082-1093

QIAN'S RETRACTOR

ViSure

Reduce post surgical pain significantly when comparing to metal retractor with similar clinical effect

Clinical trial report

Research Object: 120 patients who accepted the liver and gallbladder surgery :

Control Group (CG): patients who accepted the surgery by using metal abdominal retractor (60 case)

Experimental Group (EG): patients who accepted the surgery by using *ViSure* (60 case)

Comparison of clinical outcomes between EG and CG

	Male/Female	Average age (years)	Weight(Kg)	Traction Time(h)	Intraoperative blood loss(ml)	Average stay in hospital (days)
CG	50/10	53.38	62.3	2.12±0.617	557.8	14.4
EG	52/8	51.34	67.8	2.03±0.759	612.3	12.7
P	> 0.05	> 0.05	> 0.05	> 0.05	> 0.05	> 0.05

The results show that there is no significant difference between *ViSure* and metal retractor in surgical field exposure ($P > 0.05$). However, average stay is shorter by 1.7 days.

Comparison of wound pain between EG and CG

	Perioperative pain (VAS*) MAX	Post Operative 1 month after surgery(VAS)	Incidence of CPOP** after 6 months	Average duration of pain(months)
EG	2.6±0.65	2.2±0.55	33.3%	1.8±1.19
CG	4.1±0.45	3.7±0.79	73.3%	3.7±1.84
P	< 0.05	< 0.05	< 0.01	< 0.01

*VAS: Visual analogue scale

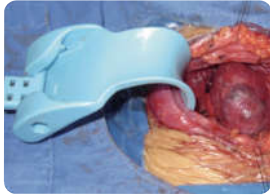
**CPOP: Chronic postoperative pain, VAS>2, duration of pain>14 days

The results show that compared with CG, the post operative pain in EG is significantly lower ($p < 0.05$) and average duration of pain is significantly shorter ($p < 0.01$).

REFERENCE :

Qian Jianming et al. Chinese Journal of experimental surgery ,2012,29(4) : 752-755

ViSure *Suitable for general open surgery*



Thyroid tumor resection




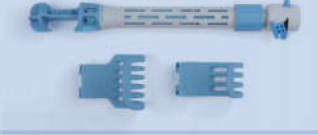

Liver transplantation



Hepatectomy



Radical gastrectomy

Product (Set)	Code	Packaging
	JM-B	10 Sets/CTN (Open Surgeries, double side retraction)
	JM-E	10 Sets/CTN (Open Surgeries, one side retraction)
	JM-C	10 Sets/CTN (Small Incision Surgeries, one side retraction)

HAIZE MEDICAL

Jiangsu Haize Medical Scientific Development Co., Ltd.

Add: Room 1808, No 129 Yan'anxi Road, Huaqiao Tower, Shanghai, China

Tel: +86 216249-6290

Fax: +86 216249-6297

E-mail: haizemed@haizemed.com.cn

Website: www.haizemed.com.cn



FDA: D205340