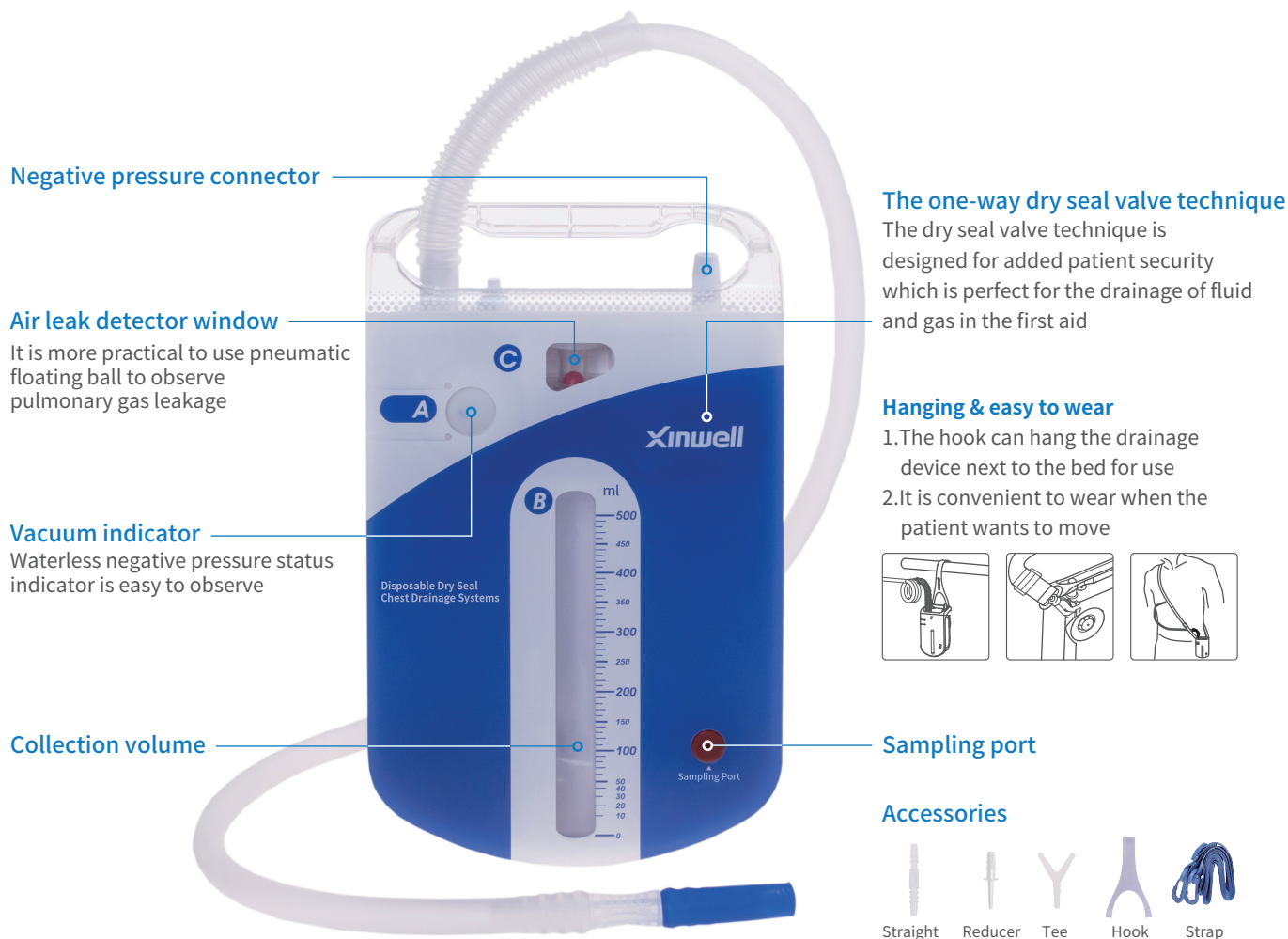


Indications for Use

The device is intended use for the drainage of traumatic pneumothorax, spontaneous pneumothorax and pleural effusion caused by various causes.



Specifications and Models

Model	Specification	Connector matched with the patient tube
AFG31-1	500mL	Straight
AFG31-2	500mL	Reducer
AFG31-3	500mL	Tee

Xinwell

Ningbo Xinwell Medical Technology Co., Ltd.

No.188 Binjiang Road, Cixi High-tech Industrial Development Zone, Cixi City, Zhejiang, P.R. China

Web: www.xinwell.com P.C. : 315301

+86-574 6302 6388

Disposable Dry Seal Chest Drainage Systems